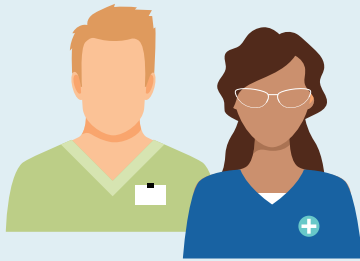


U.S. Nursing Workforce By the Numbers

Results of the 2024 National Nursing Workforce Study



The National Council of State Boards of Nursing (NCSBN) – the world leader in nursing regulatory knowledge and advancement – released its 2024 National Nursing Workforce Study, surveying 800,000 nurses to understand the state of the workforce. The study is considered to be the largest and most comprehensive research study of the nursing workforce, uncovering the data points that have far-reaching implications for the health care system at large and for patient populations.



138,000

nurses left the workforce **since 2022.**

Top reasons nurses are **leaving the workforce** aside from retirement:

- 1. stress and burnout**
- 2. workload**
- 3. understaffing**
- 4. inadequate salary**
- 5. workplace violence**



40%

indicate an intent to leave the workforce by 2029.
That's potentially 1.6 million total nurses.

7.2%

of nurses are **Latino/Hispanic**,
double the percent in 2015.



73%

 have a **baccalaureate degree** or higher. This is the highest educational level for nurses ever documented by NCSBN.

10%–16%

increase in median pre-tax annual earnings for nurses.

88% (RN) & 71% (LPN/VN)

licensees actively involved in nursing, an **increase over 2022.**
A sign employment levels have rebounded slightly.